

PURE GOLD

MILL DUTY

GOLDENROD

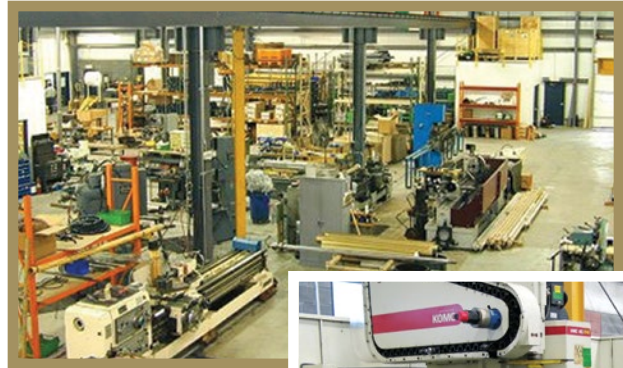


CORPORATION

CHOOSE THE INDUSTRY LEADER!

A COMPLETE LINE OF HEAVY DUTY SHAFTS AND SHAFT-HANDLING EQUIPMENT FOR MILL DUTY APPLICATIONS

Goldenrod (USA) and Svecom P.E. (Italy) combine more than 45 years of experience serving the pulp and paper industry. We are the **engineering innovators** in this market, and are the only manufacturer of both expanding reel spools and shaft handling equipment in the world. Our easy to operate, easy to maintain **reel spool shafts** feature advanced technology which allows processors to run at faster speeds with minimal vibration. Combined with a complete line of chucks/core plugs and shaft pulling equipment, we offer the industry's best selection of mill-duty products. Just ask our customers – they're the leading paper, paper board and tissue processing companies, worldwide!



COMPLETE SERVICE CENTER

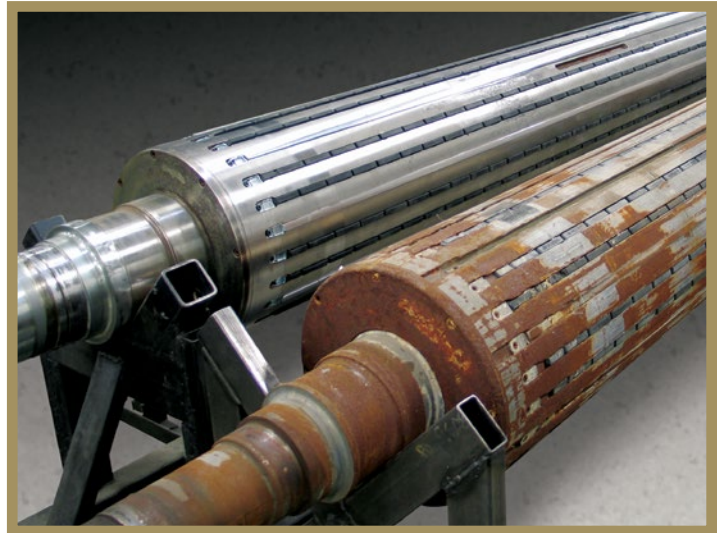
From our headquarters in Beacon Falls, Connecticut, we provide complete service capabilities to keep our customers up and running. It's here where we provide value-added services for your used shafts, including:

- reconditioning
- complete quality assurance
- straightening
- full engineering staff
- complete parts inventory
- balancing

In addition, Goldenrod has a highly trained, professional sales and service team ready to provide you with the technical assistance you need.

LARGE SHAFT REFURBISHMENT

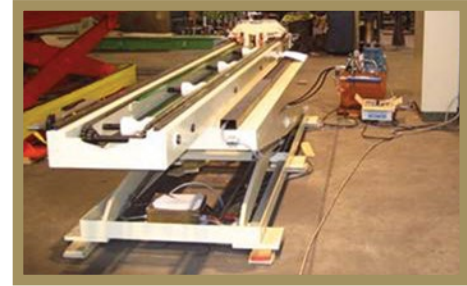
Goldenrod has the machining capabilities to bring new life to your service-worn reel spools. We can service shafts up to 240" length, and unlimited weight. Call for a quote today!



SHAFT PULLING EQUIPMENT

Goldenrod Shaft Handling Systems are built for demanding converting and mill duty environments that require continuous operation, 24 hours a day, 7 days a week. Goldenrod is the ONLY shaft manufacturer that offers a full line of shaft handling systems giving you a complete, one stop solution.

MODEL 50 – Light to medium duty applications (3" to 8" diameter shafts x 120"+ length). This unit features a pulling table atop a scissor lift platform. The pulling table utilizes polymer dumbbell shaped support rollers that protect the air shaft body from unnecessary wear. The shaft is retracted using an electric belt drive and a "V" or "U" shaped pulling head. The shaft is supported at all times. Controls can be either a hanging pendant or pedestal mounted format.



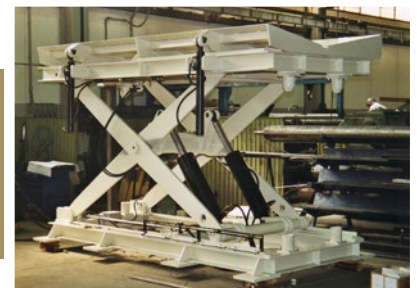
MODEL 100 – Medium to heavy duty applications (3" to 18" diameters and up x 120"+ length). This unit features a 2 column support system fitted with heavy duty hydraulic lift arms. The Model 100 system can work with your existing table or one supplied by Goldenrod. The platform utilizes polymer dumbbell shaped support rollers that protect the air shaft body. The shaft is retracted using an electric belt drive by a custom pulling head and is supported at all times. This unit can be supplied with optional automatic core loading and auto shaft inflate/deflate features.

MODEL 200 – Medium to heavy duty applications (3" to 18" diameters and up x 120"+ length). This unit is designed with a heavy duty steel frame to allow for the shaft/reel spool to be staged in a cantilevered position. This allows for simple and convenient core placement between sets by the operator. The vertical and horizontal travel capacities are custom designed for your application. The Model 200 system moves on rails mounted to the floor and is driven by an electronic motor. Vertical lift and fail/safe clamp engagement are hydraulically controlled. This unit is simple to install and takes up very little floor space. Controls can be either a hanging pendant or pedestal mounted format.



MODEL 400 – Medium to heavy duty applications (Custom designed). This system combines a fixed height, mill duty shaft puller with automatic shaft inflation/deflation, a lifting table arrangement and automatic core loaders. One operator can control the entire sequence. Goldenrod will work with you to design your system so that we meet your specifications for speed and safety and fit all in the space available.

LIFT TABLES



MOBILE SHAFT PULLERS – These wheeled units are ruggedly constructed and convenient to use. The fail-safe hydraulic grip clamps travel vertically to the correct height and firmly secure on the air shaft. Once removed, the shaft is secured, it is held in a cantilevered position and ready for new cores.

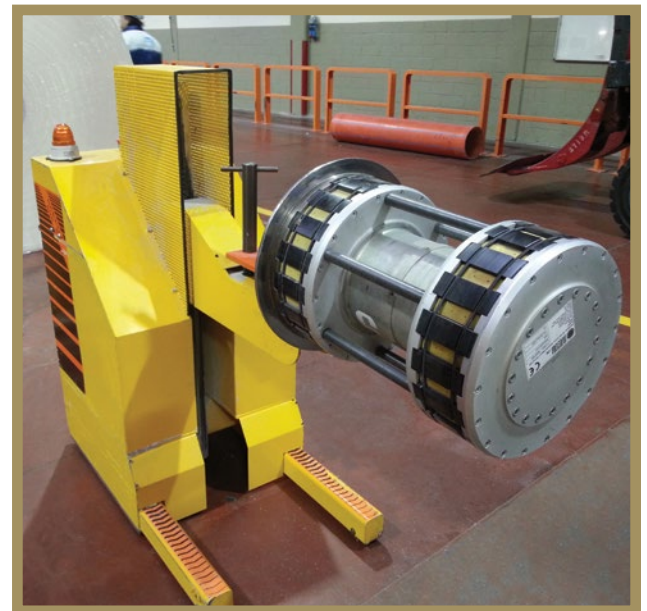
SP 3000 – The Model SP 3000 is a manual push/pull manipulator with a compact frame that enables an operator to easily handle heavy air shafts from point “A” to point “B”. The unit includes a pump arm to create hydraulic pressure for lifting. There are two cylinder control levers to allow for precise vertical movement of the support carriage and the fail/safe hydraulic grip clamp. The dimensions of the puller can be adapted to your requirements. This puller can handle shafts weighing as much as 330 pounds of cantilevered load!



SP 3100 – The “Coyote” SP-3100 has a battery-powered motor to drive it about the floor, and a secondary battery pack used by the hydraulic pump and controls. Convenient touch controls on the handlebars allow for control of the hydraulic vertical travel and the hydraulic gripping head. Vertical travel of the support head is from 24" up to 50". The turning radius is a little over 1 meter. There are designed safety features to slow and control the support carriage descent should there be a sudden loss of hydraulic pressure. This puller can handle shafts weighing as much as 500 pounds of cantilevered load!



MODEL 405 – “Speedy Cart” has all the features of its larger counterpart above, but has a more compact foot-print. This cart is specifically designed for a “24/7” operation in a tissue converting plant. It makes handling Tissue Core Plugs (like our new Model 714 MZL) quick, easy and safe as it is able to navigate narrow aisles and tight spaces.



TISSUE CONVERTING EQUIPMENT

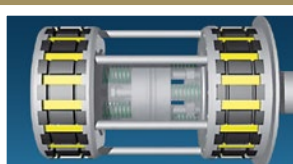
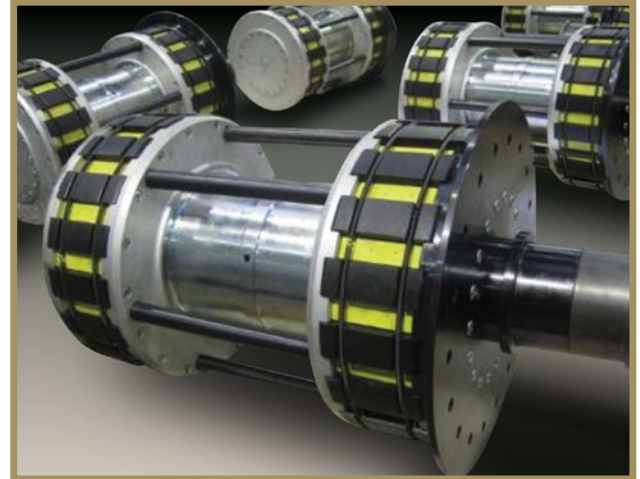
CORE PLUGS – Goldenrod offers a complete line of pneumatic and self-centering mechanical expanding plugs to wind rolls of material on cardboard cores in a belt driven application. These heavy duty chucks offer constant, non-slip grip that won't damage your cores. Bearings and bearing housings are included if required.

Goldenrod also manufactures ergonomic lightweight aluminum non-expanding core plugs for similar applications. This one-piece design is easy to handle and easy to insert into cores and is available in 10" to 16" sizes and larger.

MODEL 714 MZL (PATENTED)

- Operator friendly - mechanical expand, air retract
- Fail safe grip - zero slippage
- Faster run speeds - helps correct out of round rolls
- True Centering - Concentric running, less loping
- Increased Core Life - designed to get the most use out of every core
- Easier insertion/retraction - smaller collapsed diameter

The chuck expands 20 mm (.787") allowing easy insertion into damaged or badly worn cores. The large amount of expansion allows the chuck to be smaller in diameter and still grip the core concentrically and without slippage.



HOW DOES THE MODEL 1420 LFP / 714 MZL WORK?

LET AIR OUT TO EXPAND / ADD AIR TO CONTRACT

The expansion is mechanically achieved by large internal close-wound springs. These heavy duty springs load a piston and operate a lever system using hardened pins that independently and concentrically expand two sets of sure grip plastic pads. Expansion occurs by allowing air to escape through the valve. The chuck is collapsed using compressed air at 80 psi to compress the springs and retract the plastic expander.

MODEL 1420 NX CORE PLUG

- Lightweight - Easy pick-up and handling by one operator
- Durable - mill duty, one piece construction
- Customized per application
- Tapered Nose - Easy insertion/retraction
- Designed for use with 10" to 16" ID Cores and up



ROLL HANDLING EQUIPMENT



MODEL 405 BA – The electric Model 405/BA has a battery powered motor capable of lifting rolls of up to 32" diameter and 2200 pounds. The operator has touch controls on the handlebar to control the vertical travel. The trolley turn radius is 1120 mm (44.09"). The unit includes safety features to slow and control both lift speed and forward/reverse speeds. 120 hours of production between charges. CE Compliant.



MODEL 405/FH

The Model 405/FH is a manual push/pull roll cart with a compact frame that enables an operator to easily lift and transport finished rolls of paper, film or foil from point "A" to point "B". The unit includes a pump arm to create the hydraulic pressure and a single cylinder control lever to control movement of the roll support carriage.



MODEL 406 ROLL TROLLEY

The battery powered Model 406 Roll Trolley is designed for easy transport of finished rolls of paper, film or foil from point "A" to point "B". The operator has touch controls on the handlebar to control variable speeds for forward and reverse. The roll trolley is capable of handling a wide range of roll widths and diameters and is custom designed and manufactured to your application. CE Compliant.



MODEL 3200 REEL TURNER TROLLEY

The electro-hydraulic Model RTT 3200 has a battery powered motor to drive it about the floor and a second battery for the hydraulic pump and controls. The operator has touch controls on the handlebar to control the hydraulic vertical travel and the hydraulic (fail-safe) core probe. Maximum roll lift weight is 1000 pounds x 60" roll diameter. The trolley turn radius is a little over 1 meter. The unit includes safety features to slow and control the support carriage descent should there be a sudden loss of hydraulic pressure. CE Compliant.

MILL DUTY WINDING

HEAVY DUTY REEL SPOOL SHAFTS FOR PAPER INDUSTRY APPLICATIONS

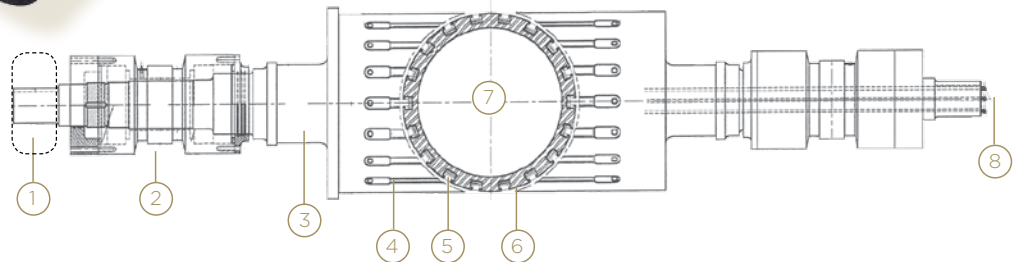
Goldenrod field-proven, heavy duty reel spool shafts are the most commonly used pneumatic shafts in the paper industry. Each shaft is custom built for your specific application and features unique, Goldenrod-only benefits including:

- both centering and internal check valves
- dynamic balance to the most critical Grade G - 1.6 standards
- available in steel or steel-sleeved carbon fiber
- fast, easy maintenance - replace bladder in 20 minutes

All Goldenrod shafts are customized to meet your exact needs. They are available in diameters up to 700mm, and lengths up to 12,000mm.



- 1) Drive hub
- 2) Bearing housing
- 3) Journal
- 4) Body
- 5) Centering ledge
- 6) Grip ledges
- 7) Proprietary isolation valve package
- 8) Air inlet



FOUNDED IN 1986,


Goldenrod Corporation is a leading North American manufacturer of winding shafts, chucks and related equipment for the converting, paper, film, foil, textile and metals industries. The Goldenrod/Svecom partnership is the largest manufacturer of winding shafts, chucks, and shaft handling equipment in the world. We are a truly global company dedicated to one thing - servicing the needs of our customers.



GOLDENROD



CORPORATION

Goldenrod Corporation - an affiliate of Svecom P.E. 

P.O. Box 95 • 25 Lancaster Drive, Beacon Falls, CT 06403 USA
Toll Free 1-800-465-3763 (GOLDROD) • Tel. (203) 723-4400 • FAX (203) 723-8230

www.goldenrodcorp.com